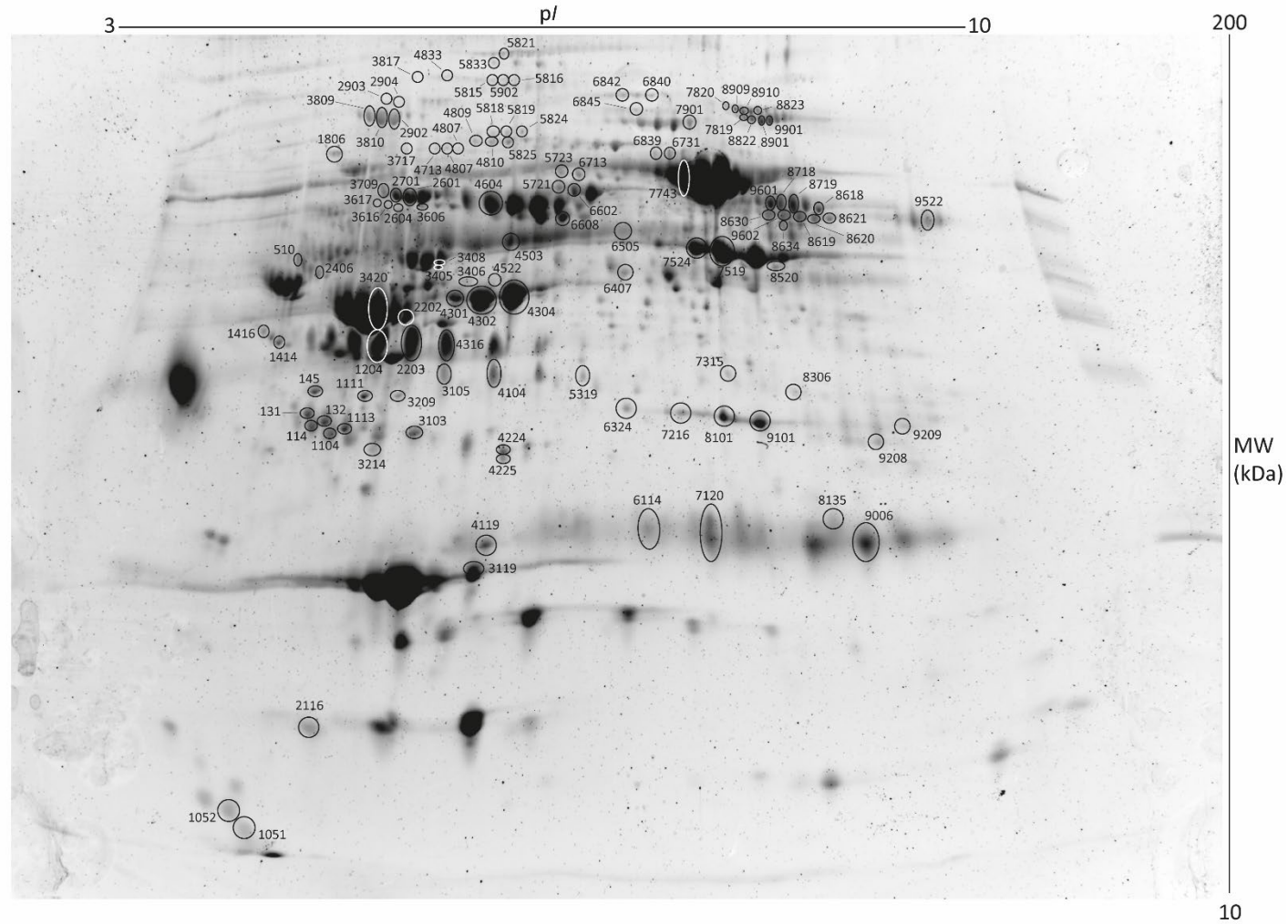


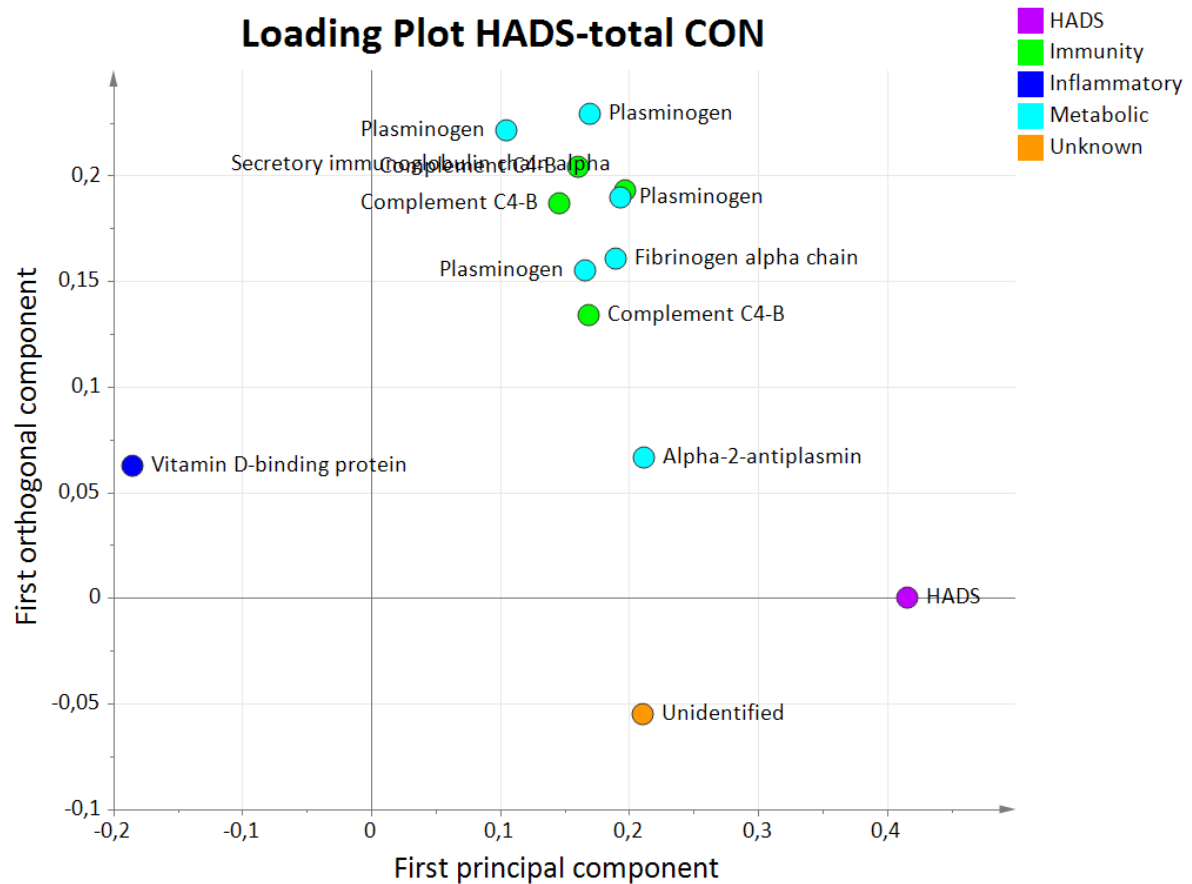
Supplementary Figures

Supplementary Figure S1. Plasma protein pattern and significant proteoforms from all MVDA models. Marked protein spot numbers corresponds to equal number in supplementary table S1. *pI*: isoelectric point, *MW*: molecular weight



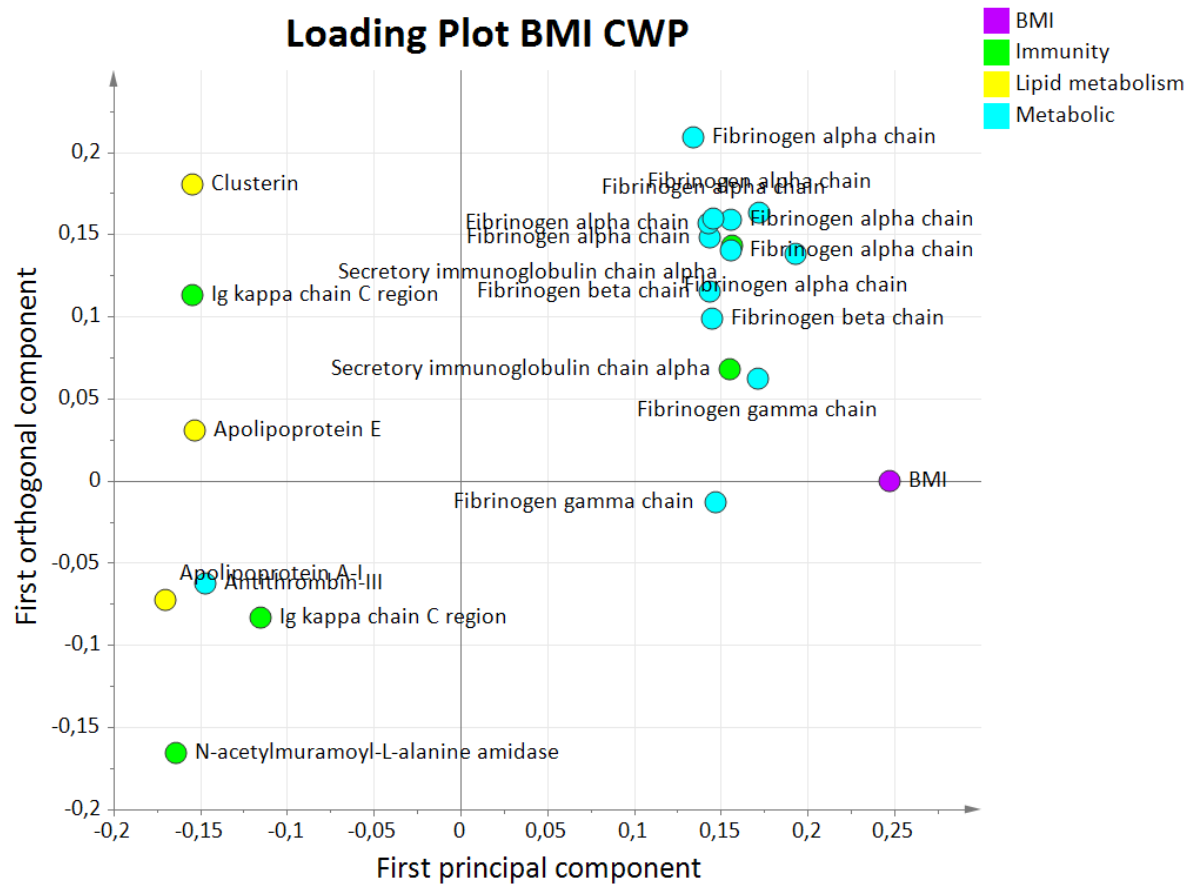
Supplementary Figure S2. OPLS model of HADS-total in CON group. Loading plot illustrating proteins with a VIP value > 1.0 associated with HADS-total in CON. All proteins belonged to either immunity or metabolic processes. The ones with highest VIP value were different proteoforms of plasminogen and alpha-2-antiplasmin, secretory immunoglobulin chain alpha.

OPLS; orthogonal partial least squares regression analysis, HADS; hospital anxiety and depression scale VIP; variable influence on projection, CON; control



Supplementary Figure S3. OPLS model of BMI in CWP group. Loading plot illustrating proteins with a VIP value > 1.0 associated with BMI in CWP. Majority of the proteins belonged to metabolic processes, and the ones with highest VIP value were different proteoforms of fibrinogen alpha and gamma chain.

OPLS; orthogonal partial least squares regression analysis, BMI; body mass index, VIP; variable influence on projection, CWP; chronic widespread pain



Supplementary Figure S4. OPLS model of Age in CWP group. Loading plot illustrating proteins with a VIP value > 1.0 associated with age in CWP. The proteins with highest VIP were several proteoforms of clusterin and apolipoprotein E, belonging to lipid metabolism.

OPLS; orthogonal partial least squares regression analysis, VIP; variable influence on projection, CWP; chronic widespread pain

