

Figure S1 The length distribution of the small RNA in four miRNA libraries.

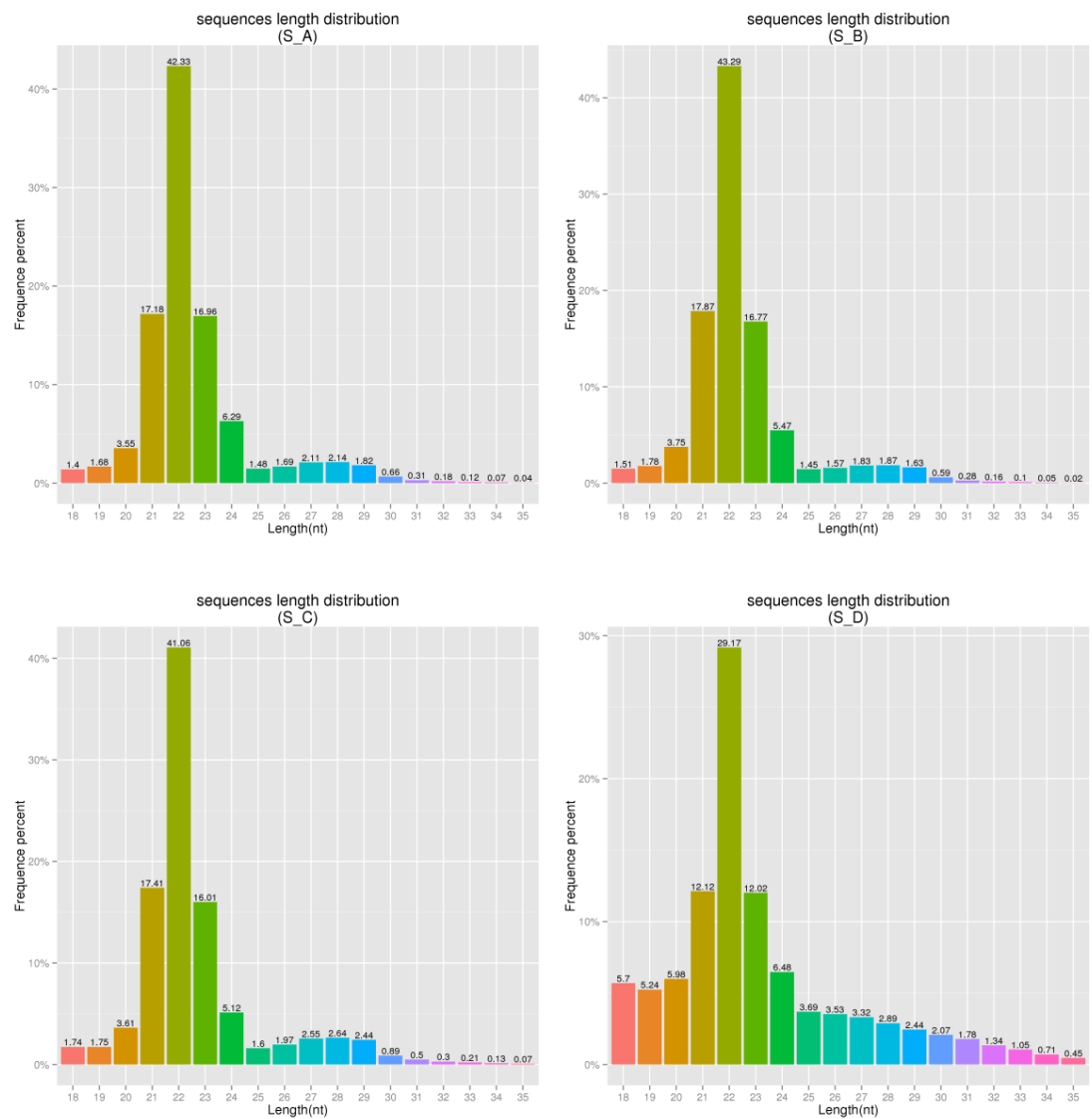
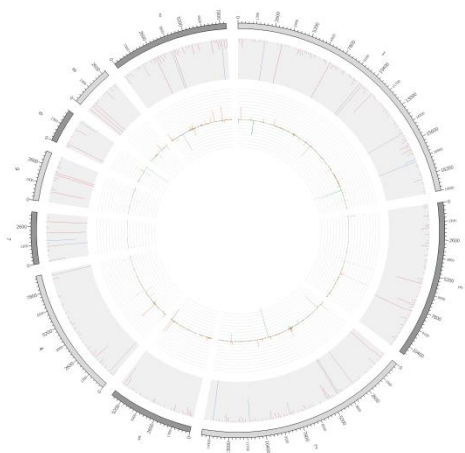
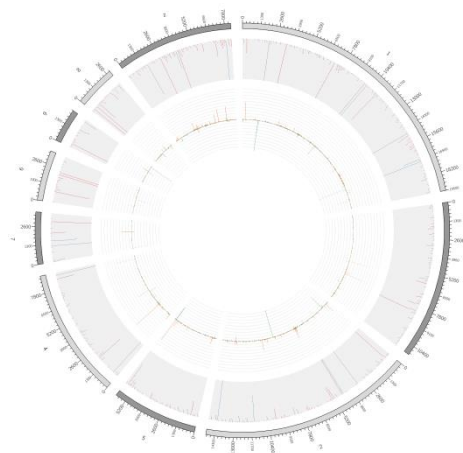


Figure S2 The distribution of reads on chromosomes.

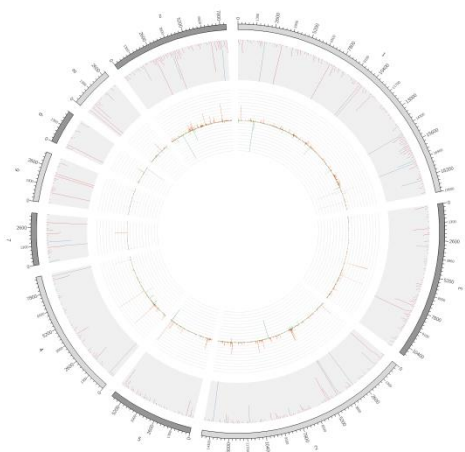
S_A



S_B



S_C



S_D

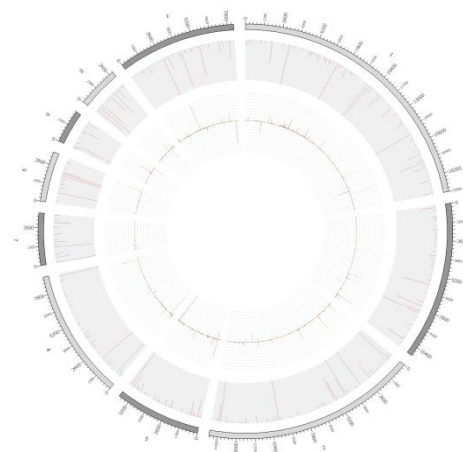


Figure S3 The volcano maps of differently expressed miRNAs.

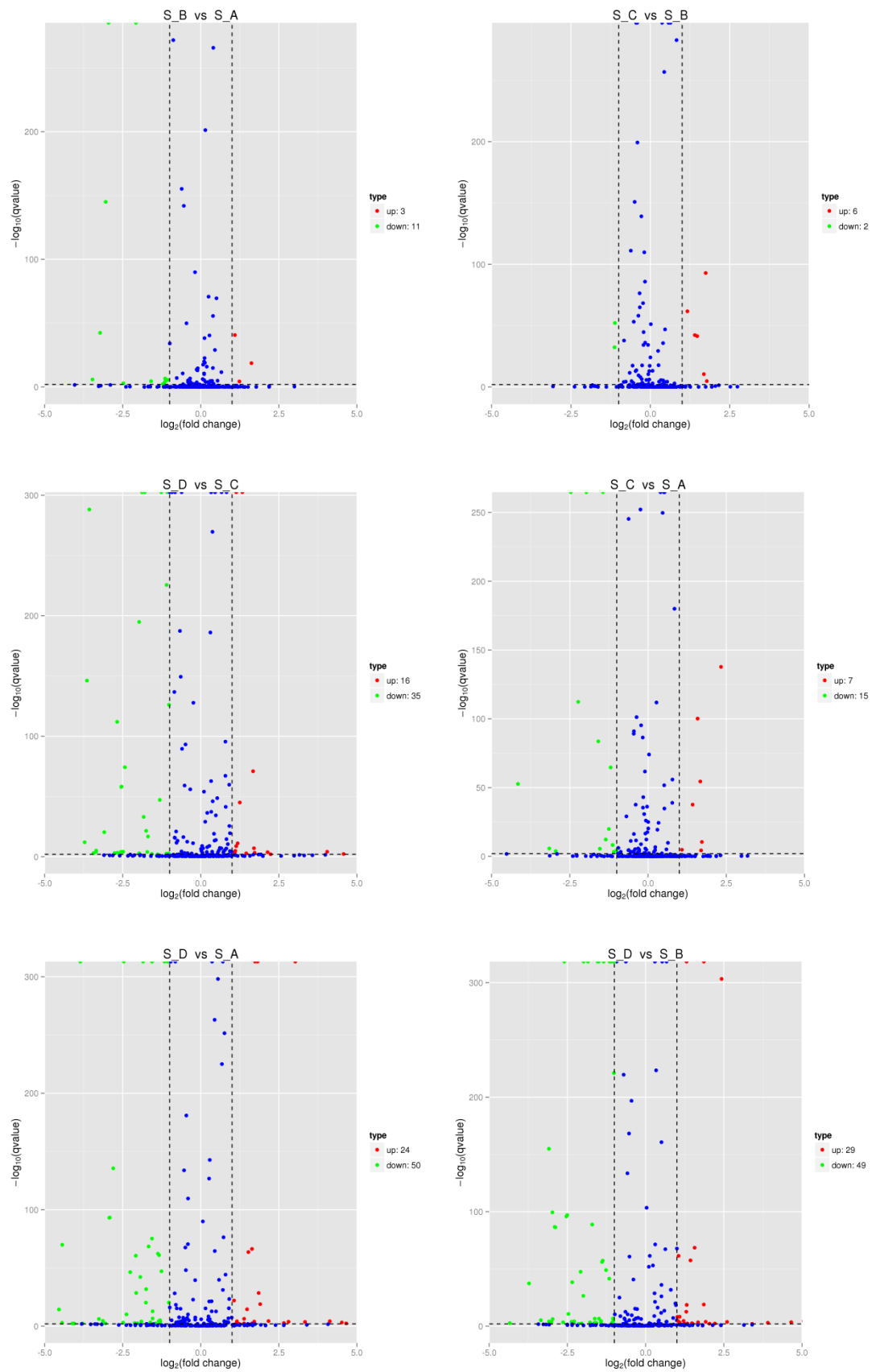


Figure S4 The reads distribution of four cDNA libraries.

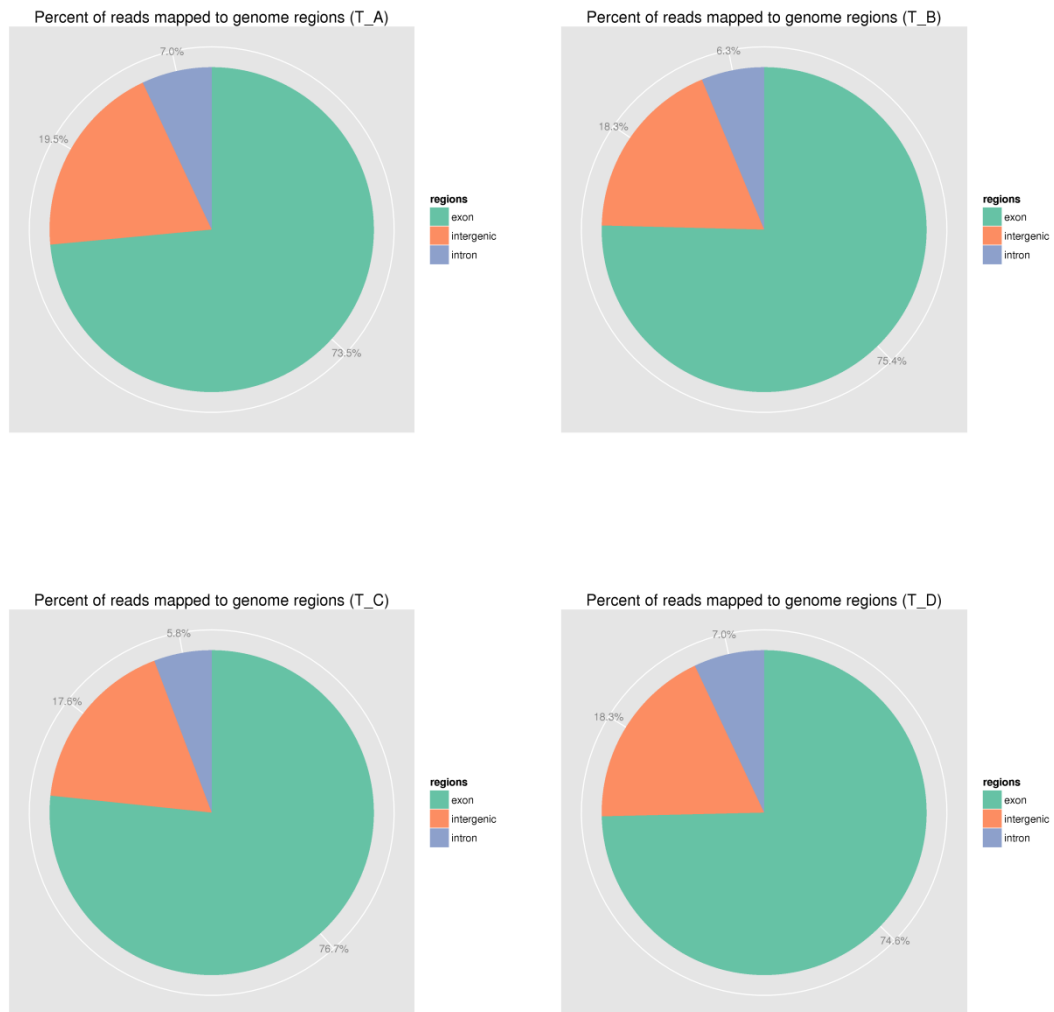


Figure S5 The volcano maps of differently expressed mRNAs.

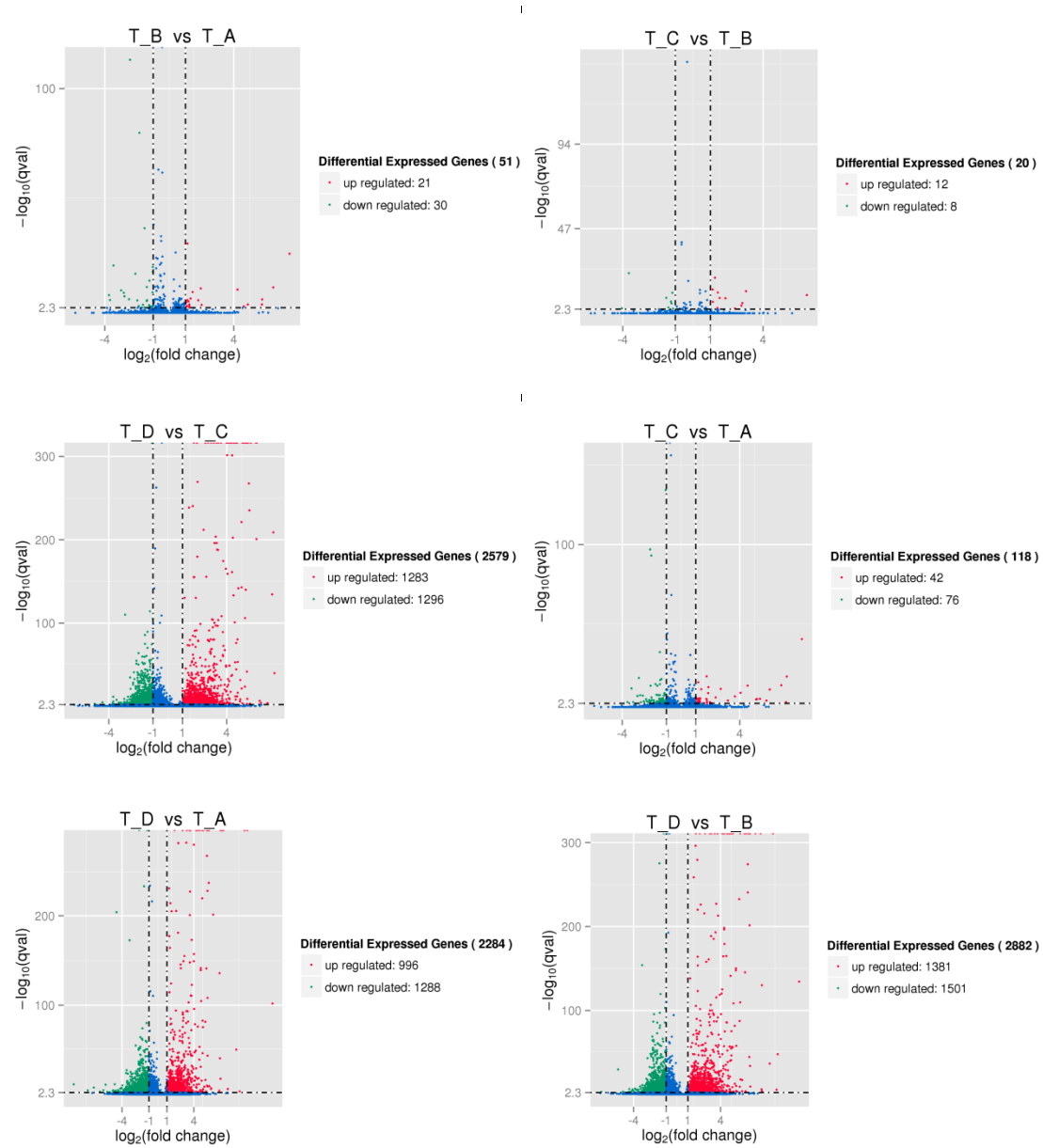
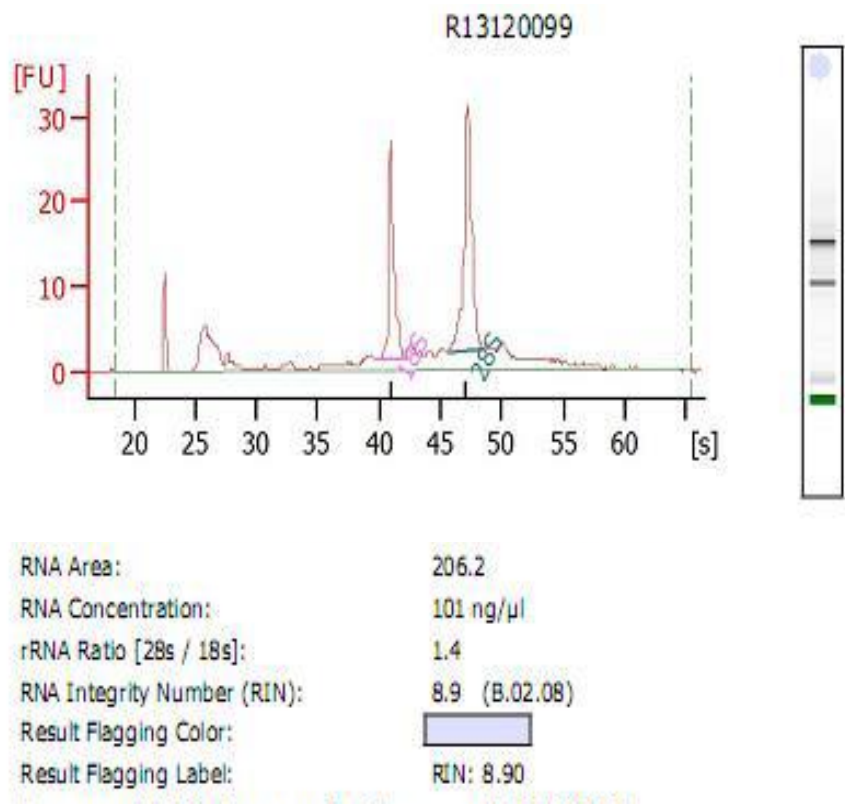
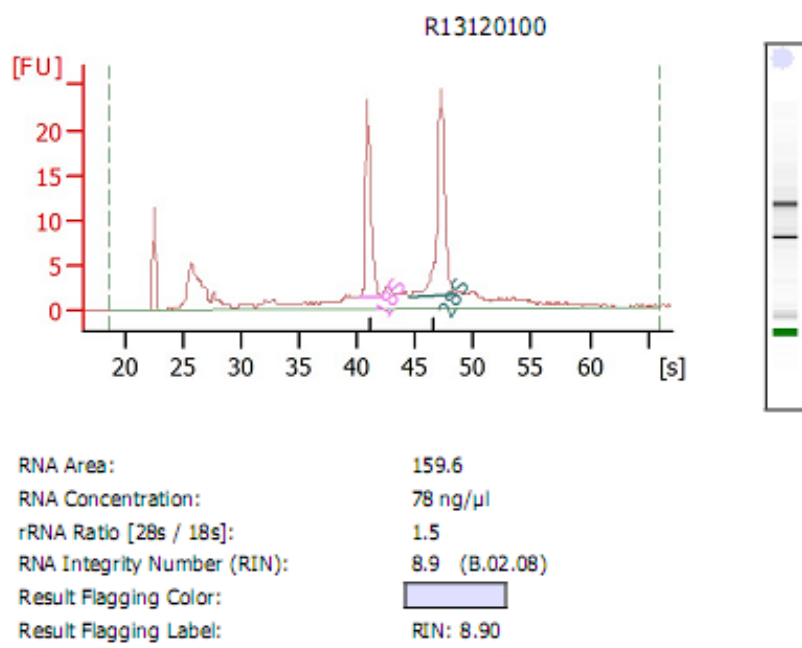


Figure S6 The details of RNA quality determined using an Agilent 2100 Bioanalyzer.

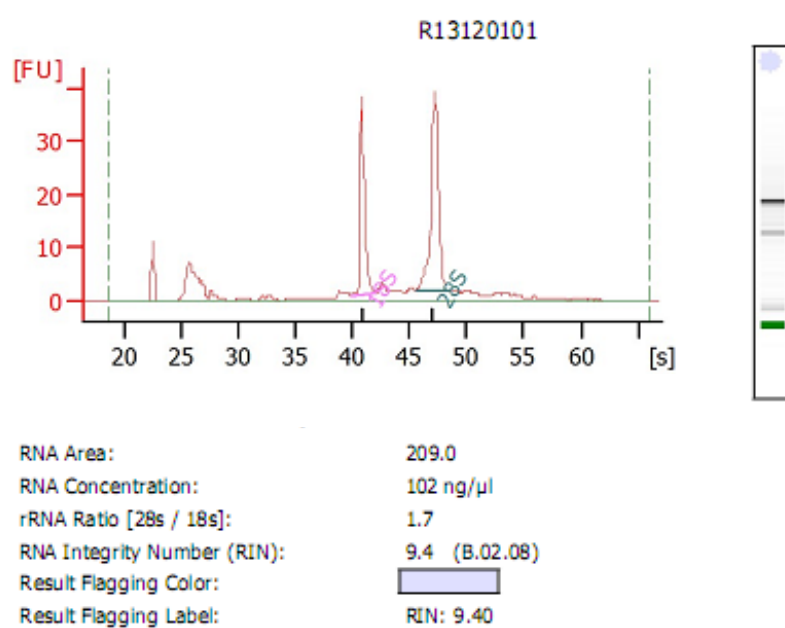
S_A



S_B



S_C



S_D

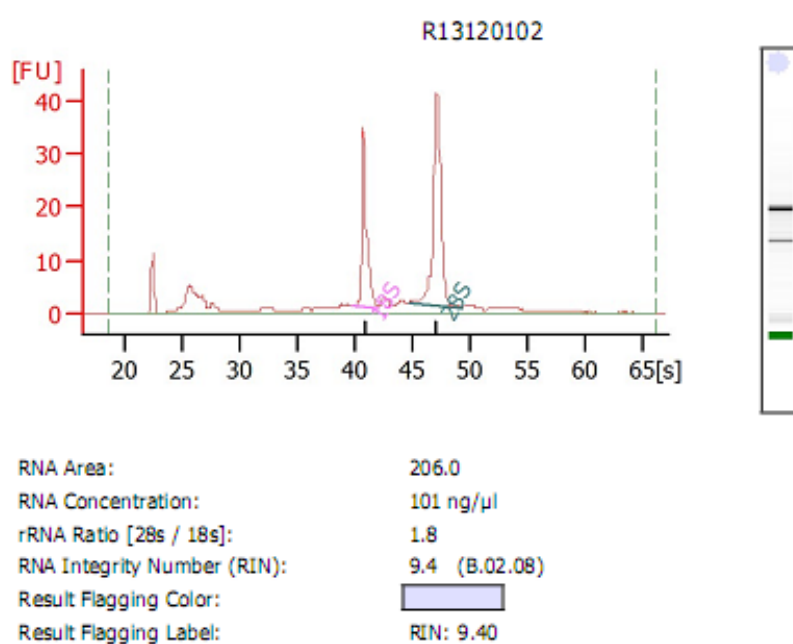


Figure S7 The quality of RNA samples detected by 1% agarose gel electrophoresis.

