

Supplementary material

Response of the bacterial communities associated with maize rhizosphere to poultry litter as an organomineral fertilizer

Vollú et al.

Frontiers in Environmental Science – section: Soil Processes

Research Topic: Microbe-Mediated Processes in Soils

Figure S1. Non-metric multidimensional scaling (NMDS) ordination diagram based on the OTU-generated matrices obtained after sequencing using primers for the 16S rRNA-coding gene. Taxonomic groups representing less than (A, B, C) and more than (D, E, F) 3% of the relative abundance were analyzed separately. A and D – all samples analyzed together, B and E – samples taken 60 days after sowing maize, and C and F – samples taken 90 days after sowing maize.

*, Bulk soil; ×, 0_P2O5; □, 130kg_STP_PL; ■, 260kg_STP_PL; △, 130kg_BAY_PL; ▲, 260kg_BAY_PL; ○, 130kg_STP; ●, 260kg_STP; blue and red colours represent samples taken 60 and 90 days after sowing maize, respectively.

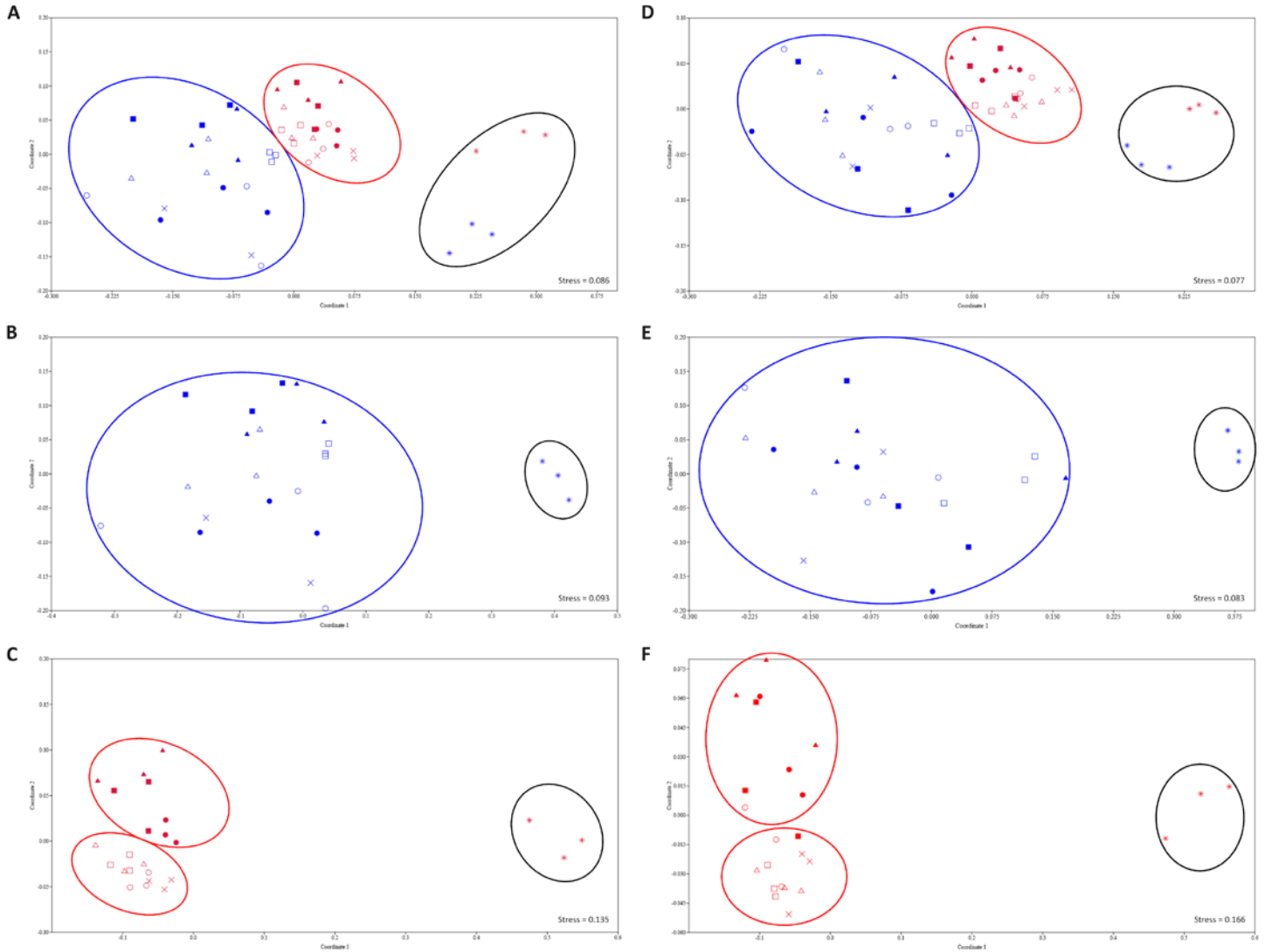


Figure S2. Correlation between phosphatase activity and *phoD* gene abundance determined by a linear regression using the R project for Statistical Computing (R core team, 2013). A - Phosphatase activity at pH 6.5, and B - Phosphatase activity at pH 11.

