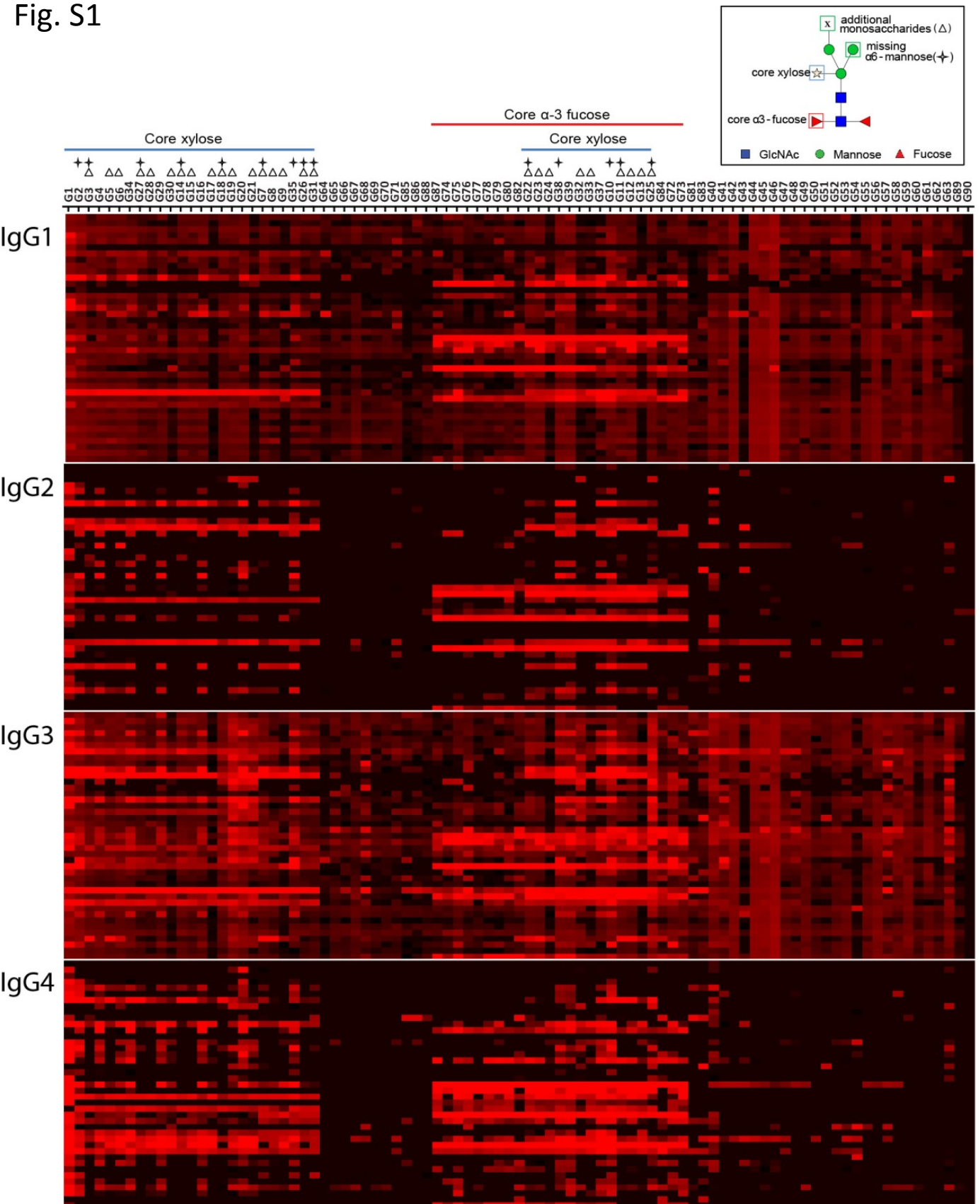


Fig. S1



Supplementary figure S1. Hierarchical clustering analysis of anti-glycan IgG1, IgG2, IgG3 and IgG4 responses in *S. mansoni* infected individuals. Heatmap showing IgG subclass response of schistosome infected subjects to core modified N-glycans that have been synthesized and described by Brzezicka *et al.*. Median fluorescence intensity was corrected for baseline and \log_2 transformed; increase in antibody binding is indicated by the red color intensity. The glycan code for each structure (Brzezicka *et al.*, 2015) is indicated and core xylosylated and core α -3 fucosylated structures are marked. Within core-xylose containing structures, those that have additional monosaccharides on the α -3 mannose (Δ) and those that miss the core α -6 mannose (*) are indicated. The order in which the individual anti-glycan responses are shown is kept the same for all four subclasses.