

Figure 1: Graph showing cell viability with different concentration of Imatinib

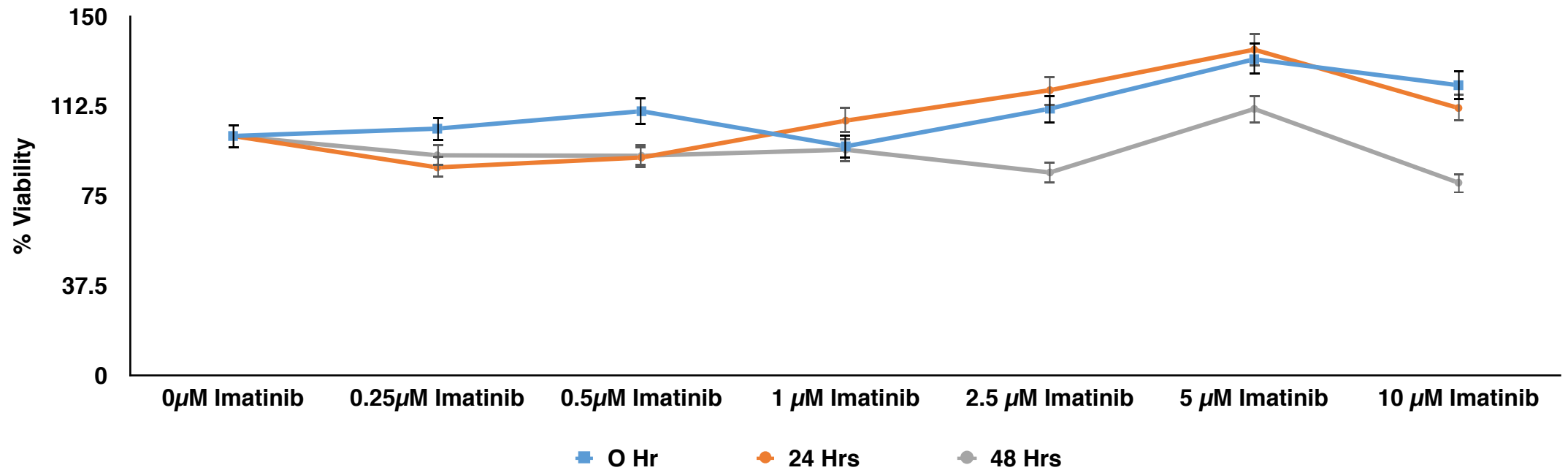


Figure 2: Graph showing cell viability assay at 0, 24h and 48h.

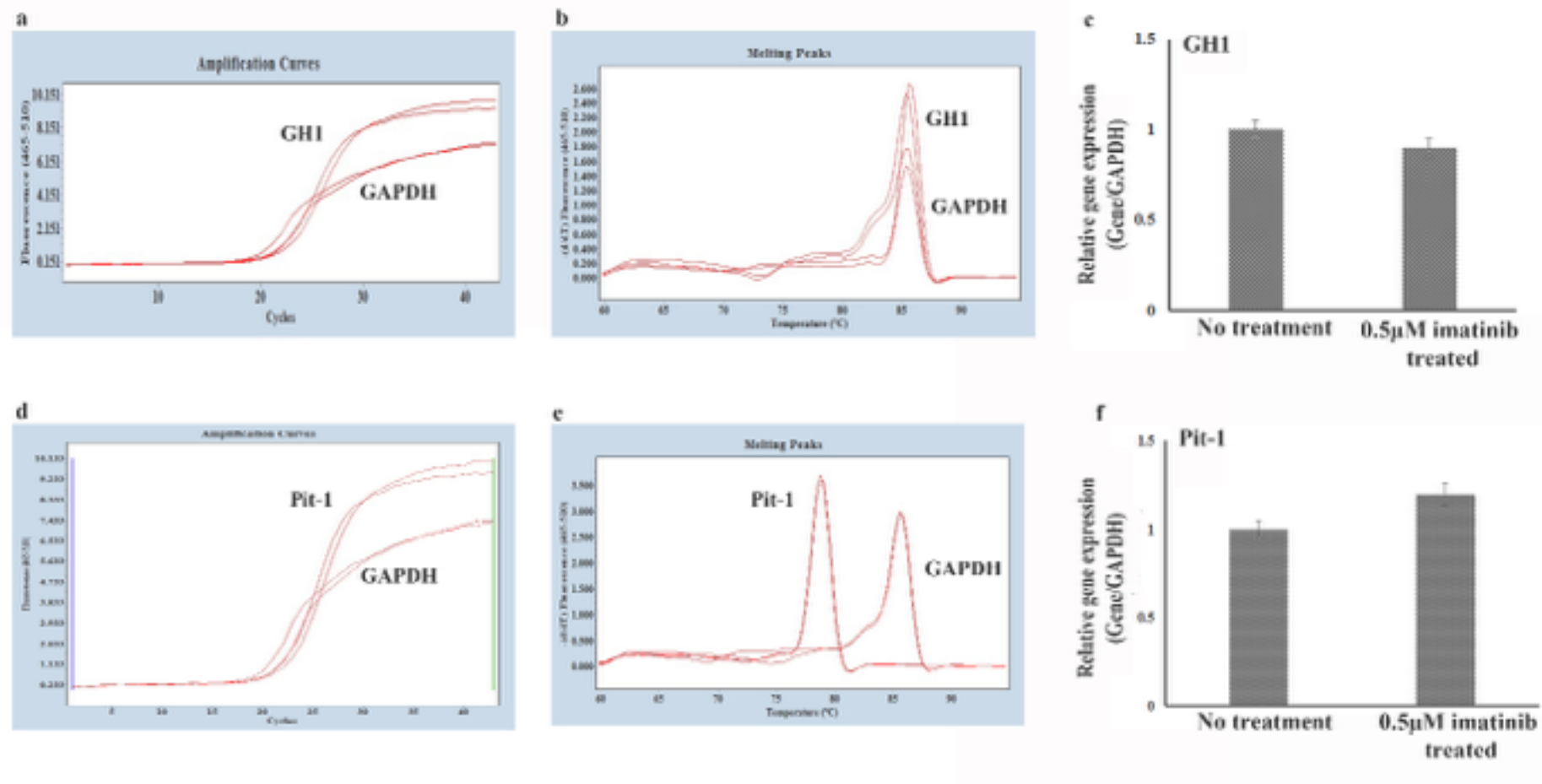


Figure 3: Real-time PCR analysis of effect of imatinib on *Pit-1* and *GH1* gene.

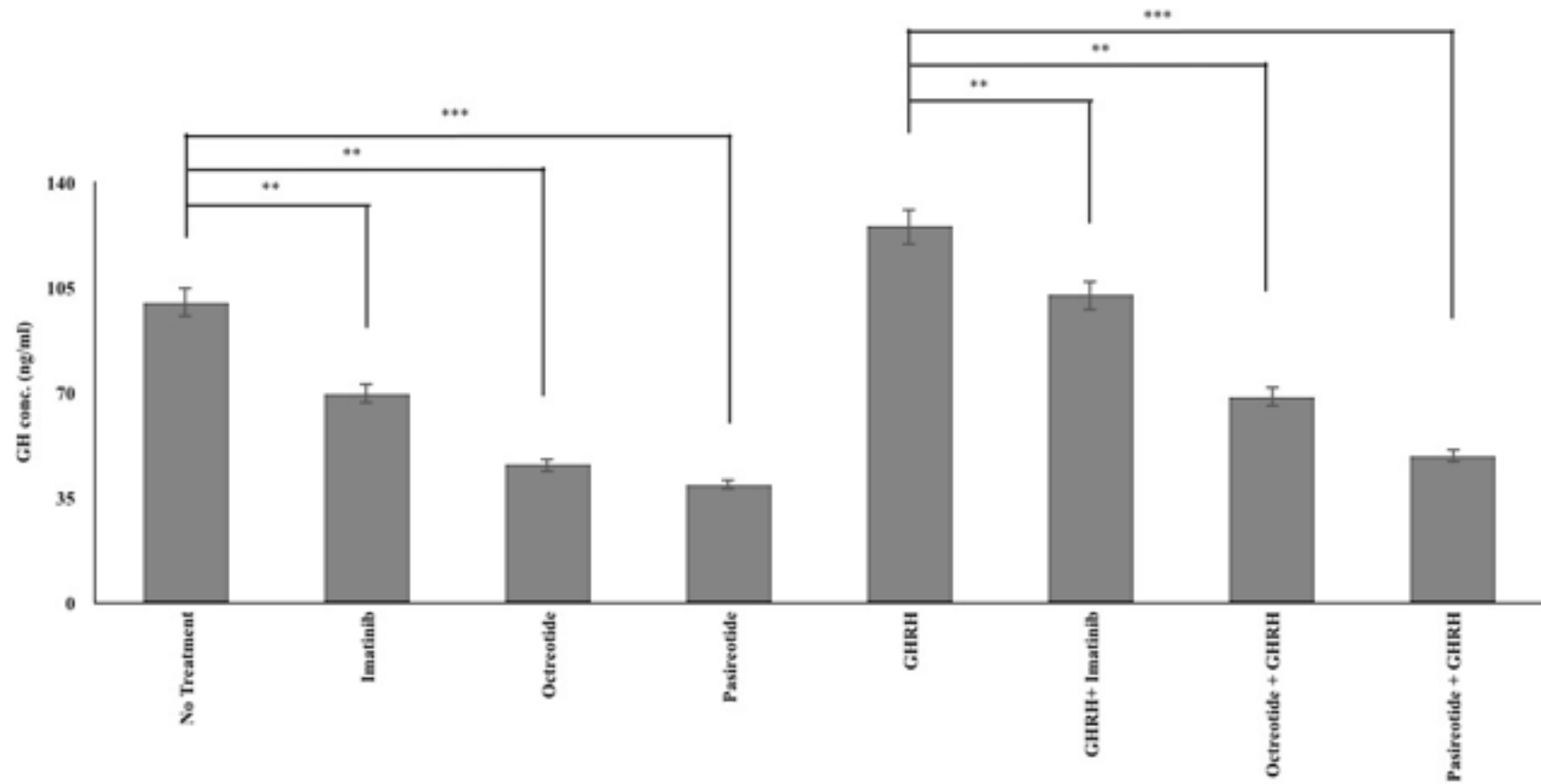


Figure 4: Graph showing effect of GH on cells treated with imatinib, octreotide, pasireotide and in combination with GHRH.

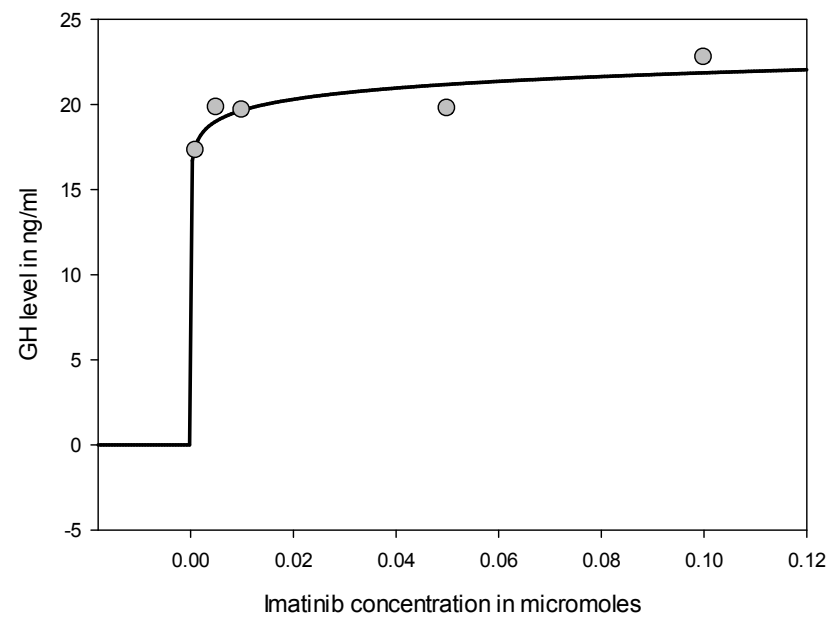


Figure 5: ED50 from imatinib treated cells. ED50 calculated from our experiment was 0.015 μM

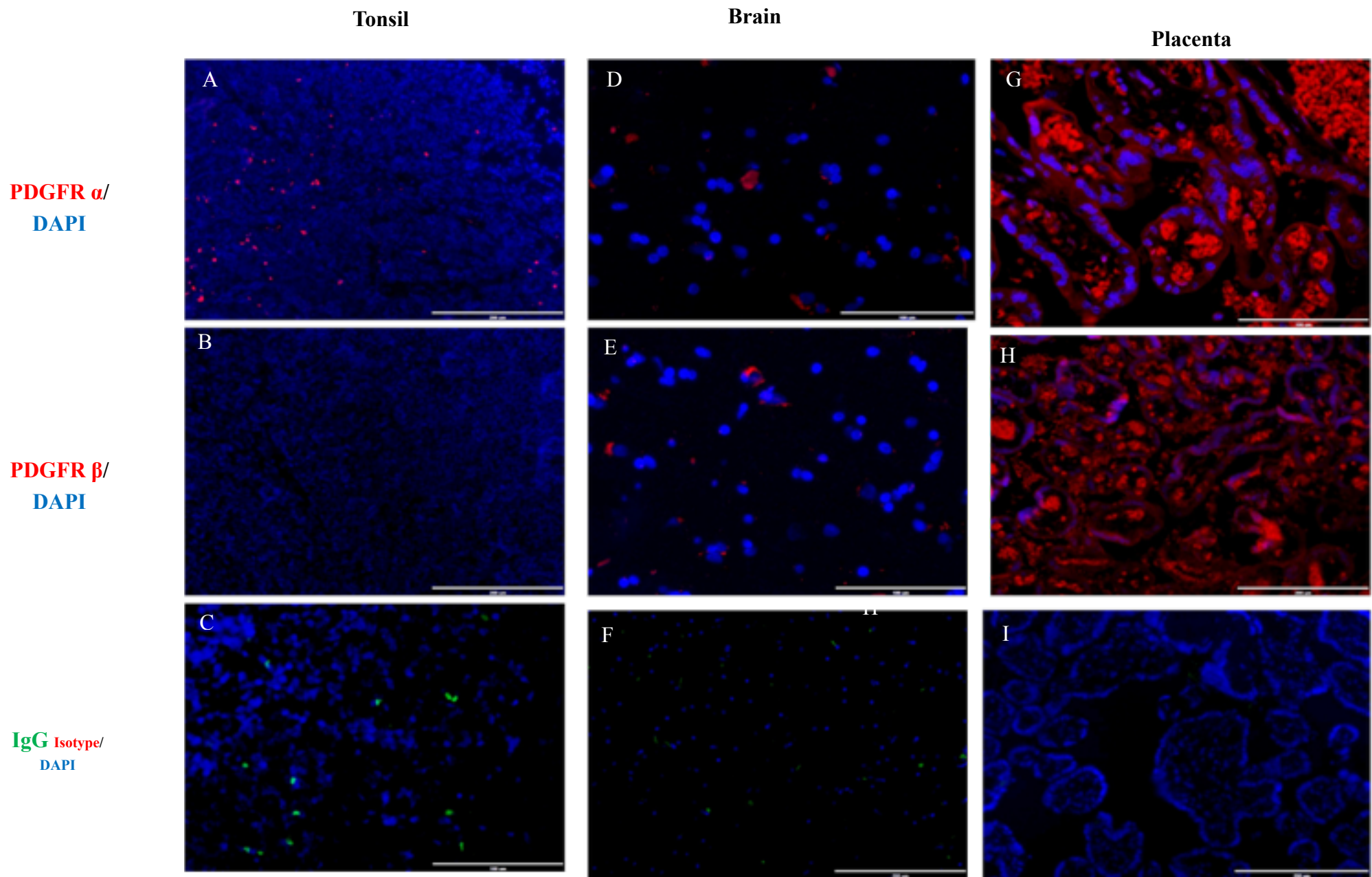


Figure 6: Controls for PDGFR α / β Immunoflourescence. Immunoflourescence for negative (Tonsil A-C and Brain D-F) and positive (Placenta,G-I)

tissue controls verifies the specificity of the PDGFR α/β antibodies. Significant expression of PDGFR α/β is seen in placenta. Also, control staining of the sections with an isotype-matched control (C,F,I) antibody without the primary antibody.