

**FOXL2 and DMRT1L are Yin and Yang genes for  
determining timing of sex differentiation in the bivalve  
mollusk *Patinopecten yessoensis***

Ruoqiao Li <sup>1, 2+</sup>, Lingling Zhang <sup>1, 3+\*</sup>, Wanru Li <sup>1</sup>, Yang Zhang <sup>1</sup>, Yangping Li <sup>1</sup>,  
Meiwei Zhang <sup>1</sup>, Liang Zhao <sup>1</sup>, Xiaoli Hu <sup>1, 3</sup>, Shi Wang <sup>1, 2</sup> and Zhenmin Bao <sup>1, 3</sup>

<sup>1</sup> MOE Key Laboratory of Marine Genetics and Breeding, Ocean University of China, Qingdao, China

<sup>2</sup> Laboratory for Marine Biology and Biotechnology, Qingdao National Laboratory for Marine Science and Technology, Qingdao, China

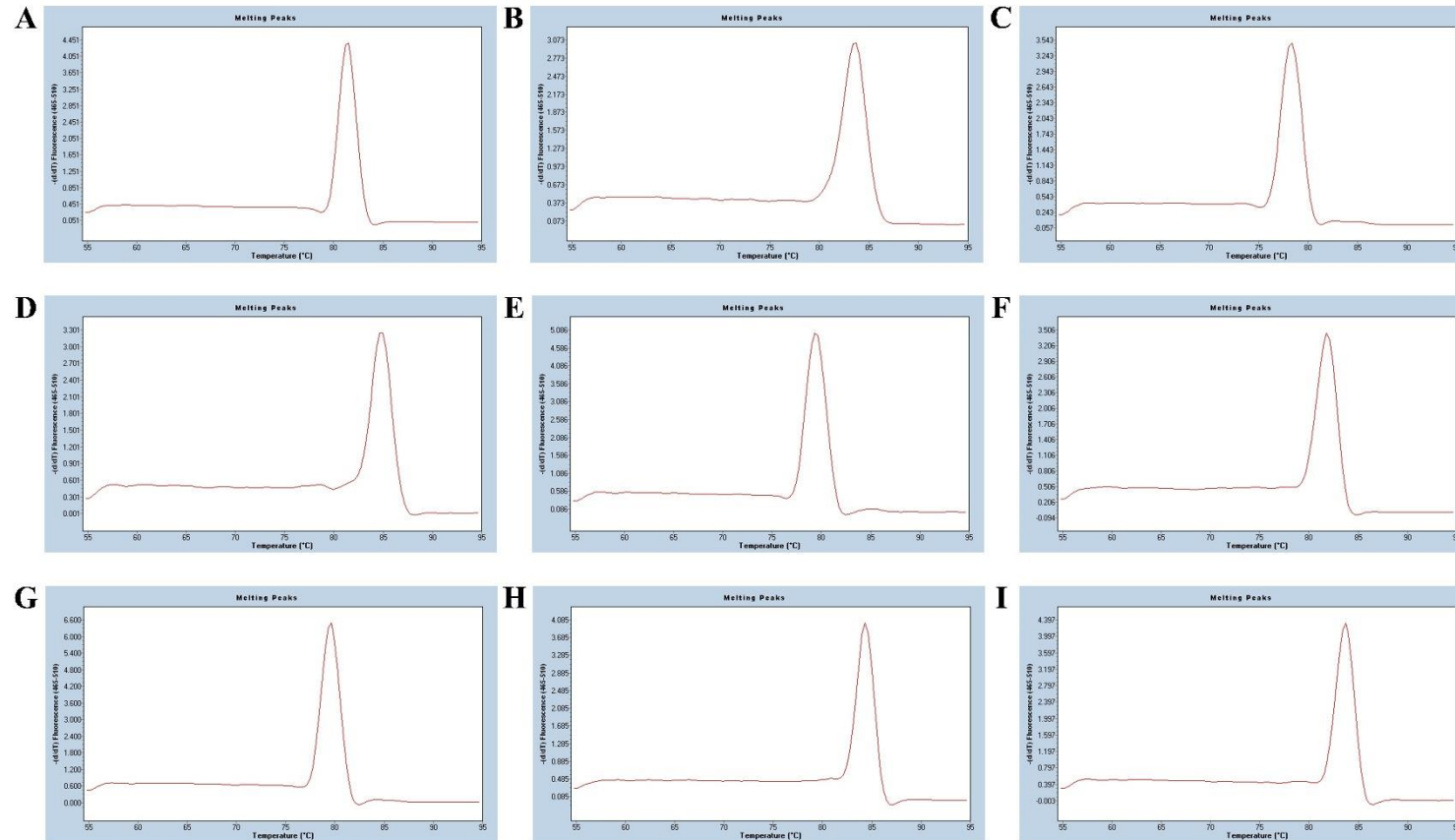
<sup>3</sup> Laboratory for Marine Fisheries Science and Food Production Processes, Qingdao National Laboratory for Marine Science and Technology, Qingdao, China

<sup>+</sup>These authors contributed equally to this work.

**\*Correspondence**

Dr. Lingling Zhang  
lingling80@ouc.edu.cn

**Supplemental material**



**Supplementary Figure 1. Melting curves of internal reference gene and candidate sex determination/differentiation genes. (A) *EF1A*; (B) *FOXL2*; (C) *WNT4*; (D) *FST*; (E)  $\beta$ -catenin; (F) *DMRT1L*; (G) *DAX1*; (H) *SOXE*; (I) *SOXH*.**