

Figure S1. Retinal morphology is rescued following delivery of AAV-smCBA-PDE6 α' . (A) Retinal morphology shows rescue of rod photoreceptor cells indicated by much thicker outer nuclear layer (ONL) and outer/inner segments (OS/IS) in treated eyes. (B) Immunohistochemistry by anti-rhodopsin antibody confirms the more abundant rhodopsin expression in treated *rd10/cpfl1* eyes relative to untreated controls. (C) Immunohistochemistry by anti-M/S-cone opsin antibodies demonstrates cone rescue in treated *rd10/cpfl1* eyes. Scale bar: 20 μ m.

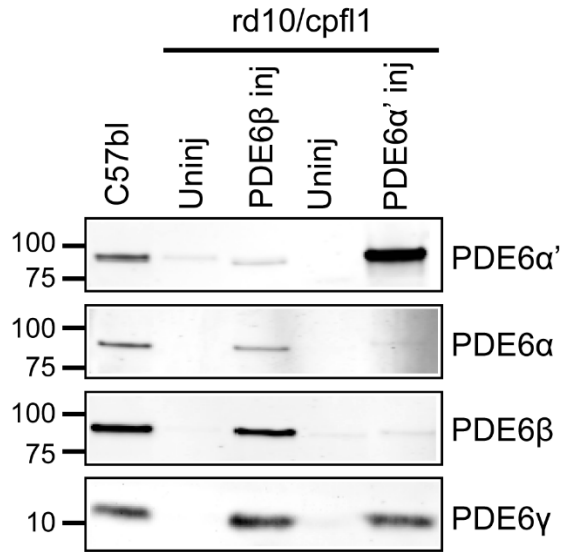


Figure S2. Injected rod PDE6 β or cone PDE6 α' in *rd10/cpfl1* retinas are assembled with endogenous rod PDE6 γ subunit. Immunoblot analysis of assembled PDE6 using ROS1-IP from retina of wild type controls, uninjected *rd10/cpfl1*, and *rd10/cpfl1* mice injected with rod PDE6 β or cone PDE6 α' . The immunoblots were probed with indicated antibodies. A protein molecular weight scale is shown on the left.